


Percentage of households
with one hearth, 1670




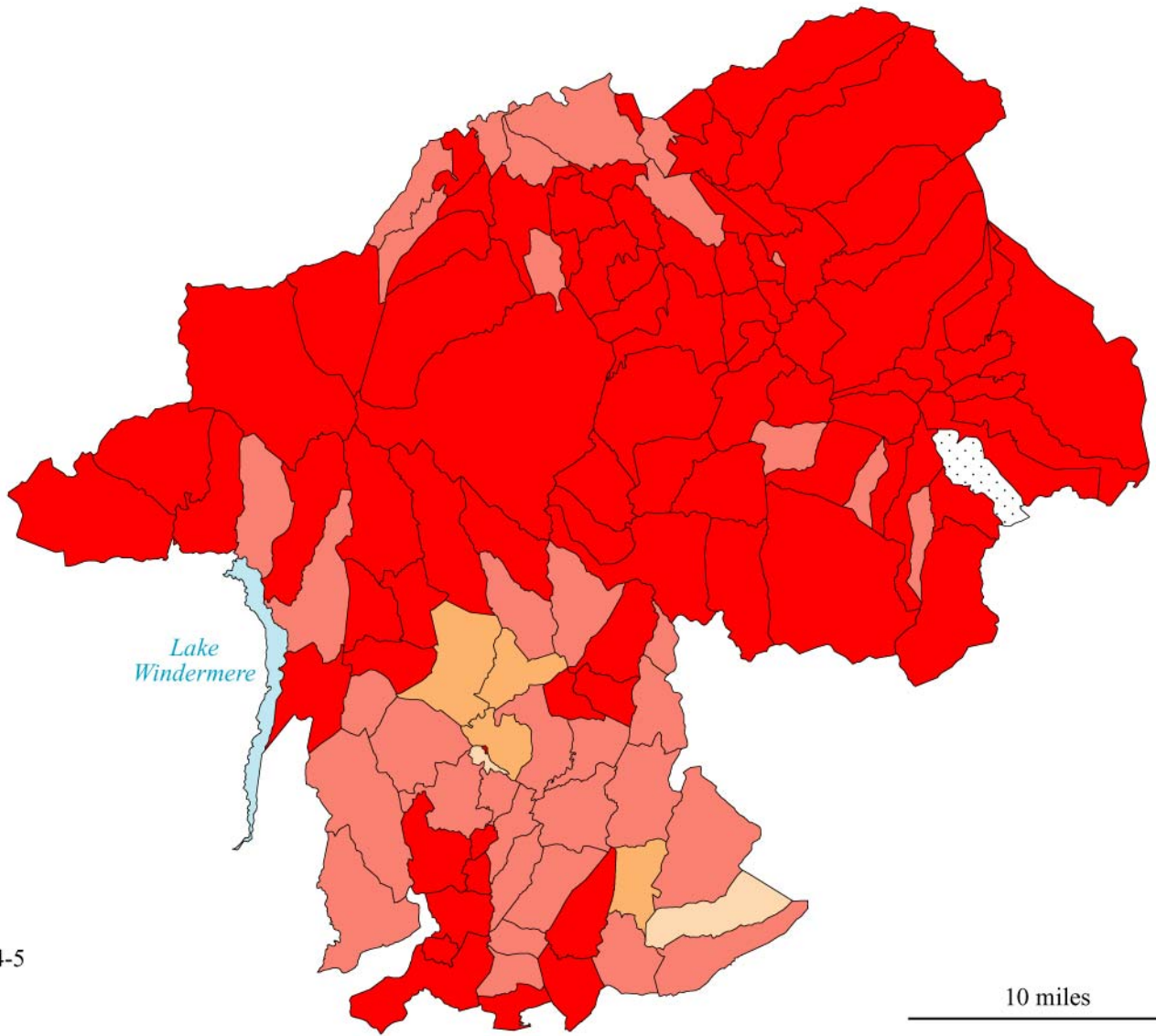
For collection areas which recorded no exempt, see map 9

 Constablewick not identified in 1670







For note on mapping see Appendix III

10 miles





Percentage of households with one hearth, 1674-5

-  Over 70%
-  50 to 70
-  40 to 50
-  30 to 40
-  Under 30
-  Constablewick not identified in 1674-5

For note on mapping see Appendix III

10 miles