


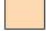

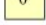



Percentage of households with three and four hearths, 1670

-  Over 30%
-  25 to 30
-  20 to 25
-  10 to 20
-  Under 10
-  None

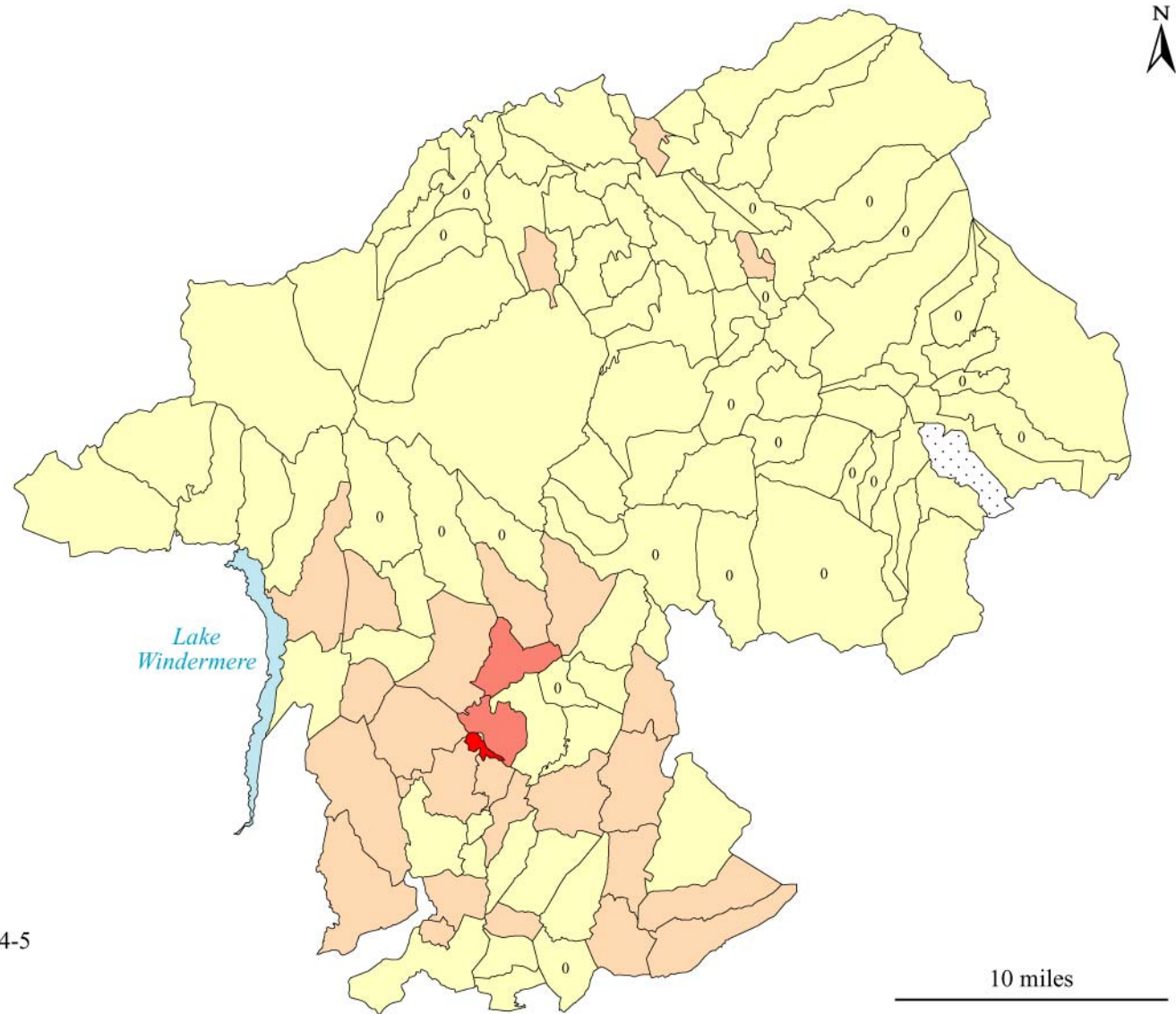
For collection areas which recorded no exempt, see map 9

 Constablewick not identified in 1670

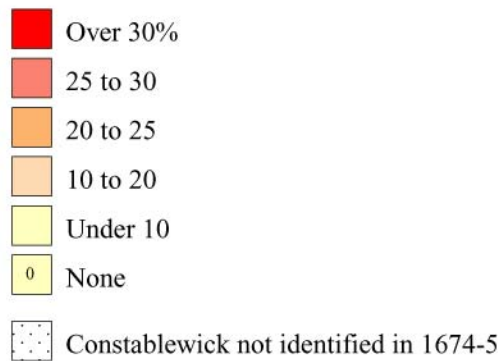
For note on mapping see Appendix III

10 miles





Percentage of households with three and four hearths, 1674-5



For note on mapping see Appendix III