


Percentage of households with five to nine hearths, 1670

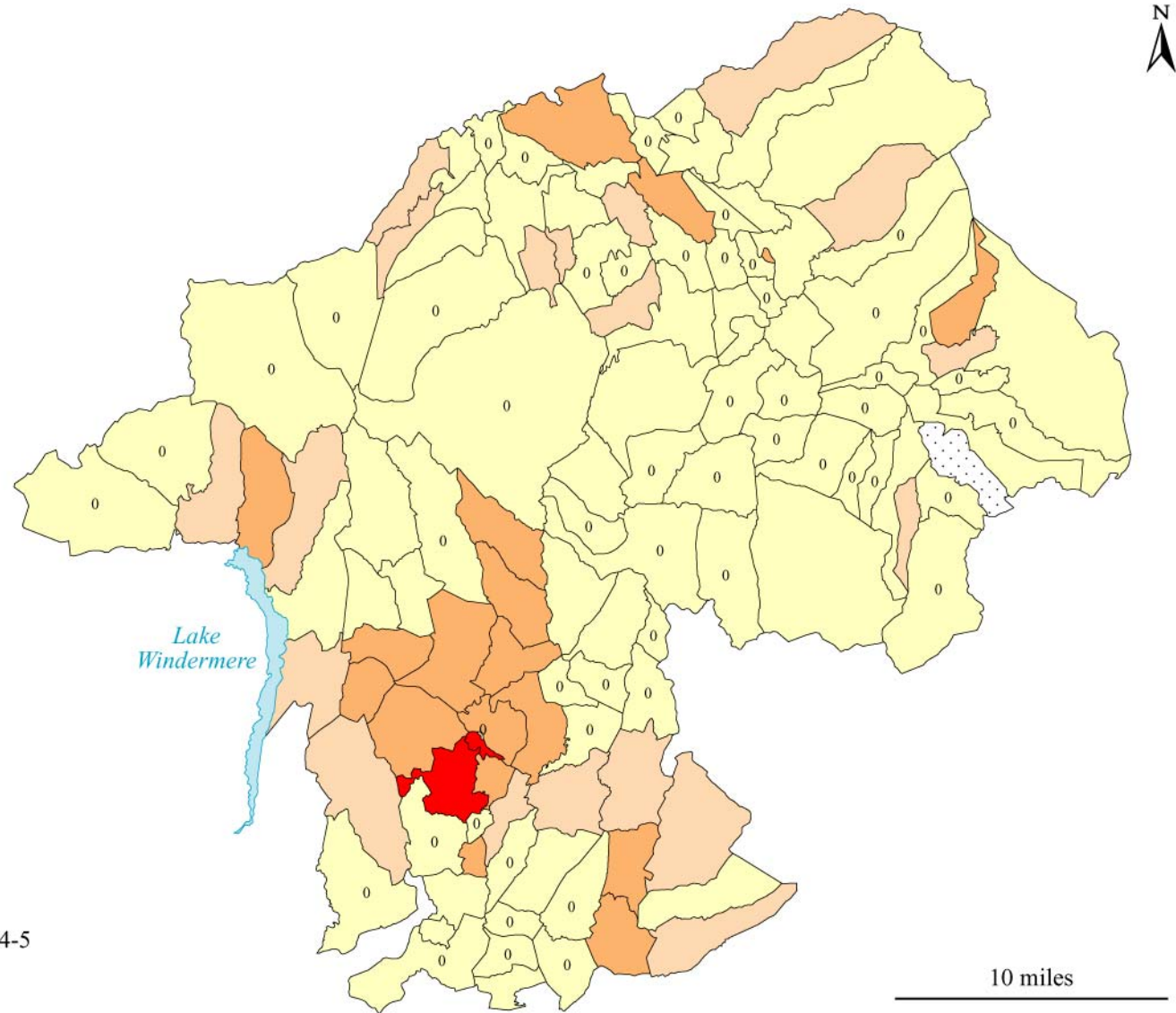
-  Over 12%
-  6 to 12
-  3 to 6
-  Under 3
-  None

For collection areas which recorded no exempt, see map 9

 Constablewick not identified in 1670

For note on mapping see Appendix III

10 miles



Percentage of households with five to nine hearths, 1674-5

Over 12%

6 to 12

3 to 6

Under 3

0 None

Constablewick not identified in 1674-5

For note on mapping see Appendix III